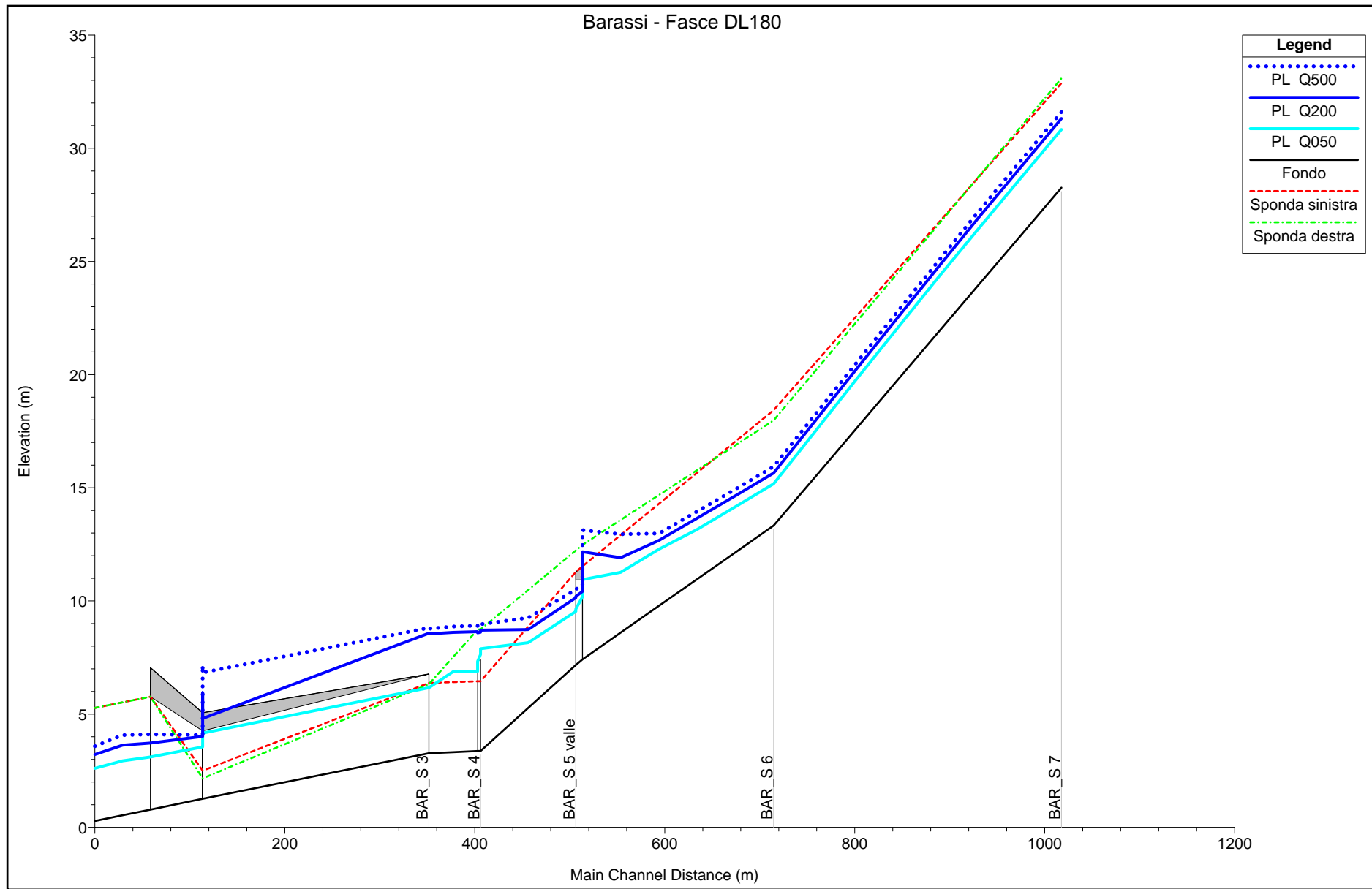


# **Torrente Barassi**

VERIFICHE IDRAULICHE



HEC-RAS Plan: Imported Pla River: Rio Barassi Reach: Terminale

Reach	River Sta	Profile	Q Total (m3/s)	Min Ch El (m)	LOB Elev (m)	L. Freeboard (m)	ROB Elev (m)	R. Freeboard (m)	W.S. Elev (m)	Crit W.S. (m)	E.G. Elev (m)	E.G. Slope (m/m)	Vel Chnl (m/s)	Flow Area (m2)	Top Width (m)	Froude # Chl
Terminale	6	Q050	86.70	28.26	32.88	2.05	33.09	2.26	30.83	30.83	31.66	0.010533	4.03	21.51	13.02	1.00
Terminale	6	Q200	125.40	28.26	32.88	1.56	33.09	1.77	31.31	31.31	32.34	0.010209	4.48	28.01	13.69	1.00
Terminale	6	Q500	150.90	28.26	32.88	1.28	33.09	1.49	31.60	31.60	32.73	0.010104	4.72	31.98	14.09	1.00
Terminale	5	Q050	86.70	13.33	18.43	3.26	17.98	2.80	15.18	15.18	16.02	0.009660	4.06	21.36	12.74	1.00
Terminale	5	Q200	125.40	13.33	18.43	2.78	17.98	2.33	15.65	15.65	16.71	0.009497	4.57	27.45	12.88	1.00
Terminale	5	Q500	150.90	13.33	18.43	2.50	17.98	2.05	15.93	15.93	17.13	0.009490	4.85	31.10	12.96	1.00
Terminale	4	Q050	89.70	7.42	11.53	0.59	12.48	1.53	10.94	9.78	11.34	0.002721	2.79	32.18	11.13	0.52
Terminale	4	Q200	129.80	7.42	11.53	-0.64	12.48	0.31	12.17	10.39	12.55	0.001913	2.75	50.00	18.14	0.44
Terminale	4	Q500	156.10	7.42	11.53	-1.60	12.48	-0.65	13.13	10.75	13.44	0.001251	2.54	70.70	28.43	0.37
Terminale	3.99	Bridge														
Terminale	3.98	Q050	89.70	7.17	11.28	1.75	12.23	2.69	9.54	9.54	10.56	0.010102	4.48	20.04	9.82	1.00
Terminale	3.98	Q200	129.80	7.17	11.28	1.14	12.23	2.08	10.14	10.14	11.39	0.009995	4.95	26.22	10.51	1.00
Terminale	3.98	Q500	156.10	7.17	11.28	0.78	12.23	1.73	10.50	10.50	11.88	0.009966	5.20	30.02	10.91	1.00
Terminale	3	Q050	90.00	3.37	6.45	-1.44	8.74	0.85	7.89	6.80	8.09	0.001333	2.11	53.78	27.27	0.39
Terminale	3	Q200	130.20	3.37	6.45	-2.26	8.74	0.03	8.71	7.26	8.91	0.001134	2.21	76.23	27.61	0.37
Terminale	3	Q500	156.60	3.37	6.45	-2.52	8.74	-0.23	8.97	7.52	9.21	0.001270	2.45	83.54	28.77	0.39
Terminale	2.99	Bridge														
Terminale	2.98	Q050	90.00	3.37	6.45	-0.44	8.74	1.85	6.89	6.80	7.53	0.006038	3.62	28.09	23.86	0.80
Terminale	2.98	Q200	130.20	3.37	6.45	-2.20	8.74	0.09	8.64	7.26	8.86	0.001205	2.26	74.49	27.58	0.38
Terminale	2.98	Q500	156.60	3.37	6.45	-2.46	8.74	-0.17	8.91	7.52	9.16	0.001347	2.49	81.80	28.47	0.40
Terminale	2	Q050	99.20	3.27	6.38	0.21	6.32	0.15	6.17	5.93	7.14	0.009406	4.38	22.64	14.06	0.87
Terminale	2	Q200	143.60	3.27	6.38	-2.16	6.32	-2.23	8.54	6.62	8.79	0.001306	2.48	78.21	22.84	0.36
Terminale	2	Q500	172.80	3.27	6.38	-2.39	6.32	-2.45	8.77	7.12	9.09	0.001583	2.81	83.36	22.84	0.39
Terminale	1.99	Bridge														
Terminale	1.5	Q050	99.20	1.26	2.50	-1.98	2.16	-2.31	4.48	3.67	5.11	0.001443	3.56	29.46	9.71	0.64
Terminale	1.5	Q200	143.60	1.26	2.50	-3.45	2.16	-3.79	5.95	4.30	6.57	0.000842	3.52	43.79	9.71	0.52
Terminale	1.5	Q500	172.80	1.26	2.50	-4.65	2.16	-4.99	7.15	4.69	7.72	0.000567	3.36	55.46	9.71	0.44
Terminale	1.01	Bridge														
Terminale	1	Q050	100.70	0.78	5.77	2.67	5.77	2.67	3.10	3.10	4.21	0.004838	4.65	21.65	9.81	1.00
Terminale	1	Q200	145.70	0.78	5.77	2.05	5.77	2.05	3.72	3.72	5.13	0.004991	5.26	27.68	9.81	1.00
Terminale	1	Q500	175.30	0.78	5.77	1.67	5.77	1.67	4.10	4.08	5.69	0.005048	5.58	31.44	9.81	0.99
Terminale	0	Q050	100.70	0.28	5.27	2.67	5.27	2.67	2.60	2.60	3.71	0.010901	4.65	21.64	9.81	1.00
Terminale	0	Q200	145.70	0.28	5.27	2.05	5.27	2.05	3.22	3.22	4.63	0.011282	5.27	27.64	9.81	1.00

HEC-RAS Plan: Imported Pla River: Rio Barassi Reach: Terminale (Continued)

Reach	River Sta	Profile	Q Total (m3/s)	Min Ch El (m)	LOB Elev (m)	L. Freeboard (m)	ROB Elev (m)	R. Freeboard (m)	W.S. Elev (m)	Crit W.S. (m)	E.G. Elev (m)	E.G. Slope (m/m)	Vel Chnl (m/s)	Flow Area (m2)	Top Width (m)	Froude # Chl
Terminale	0	Q500	175.30	0.28	5.27	1.69	5.27	1.69	3.58	3.58	5.19	0.011540	5.61	31.26	9.81	1.00

