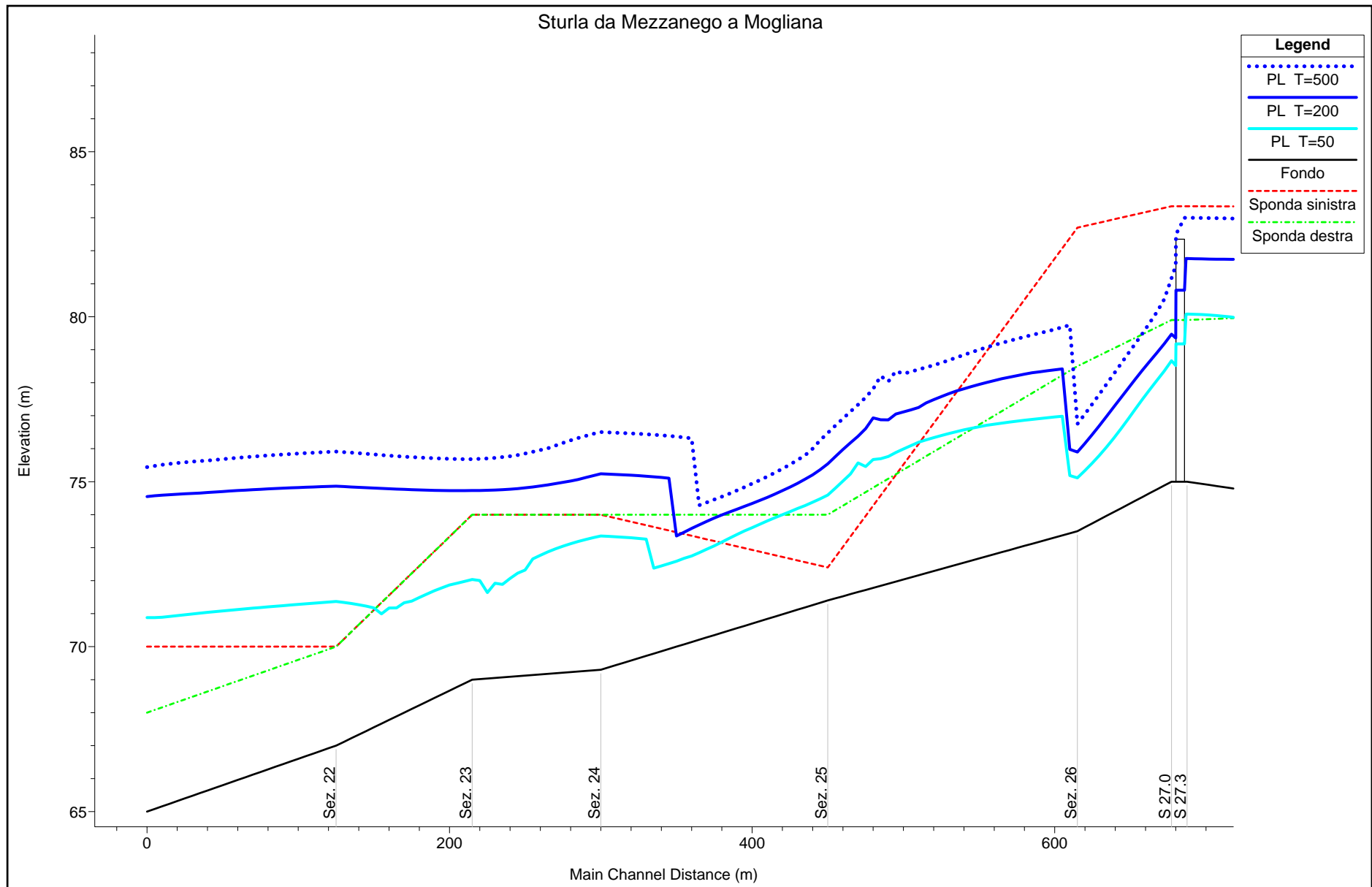
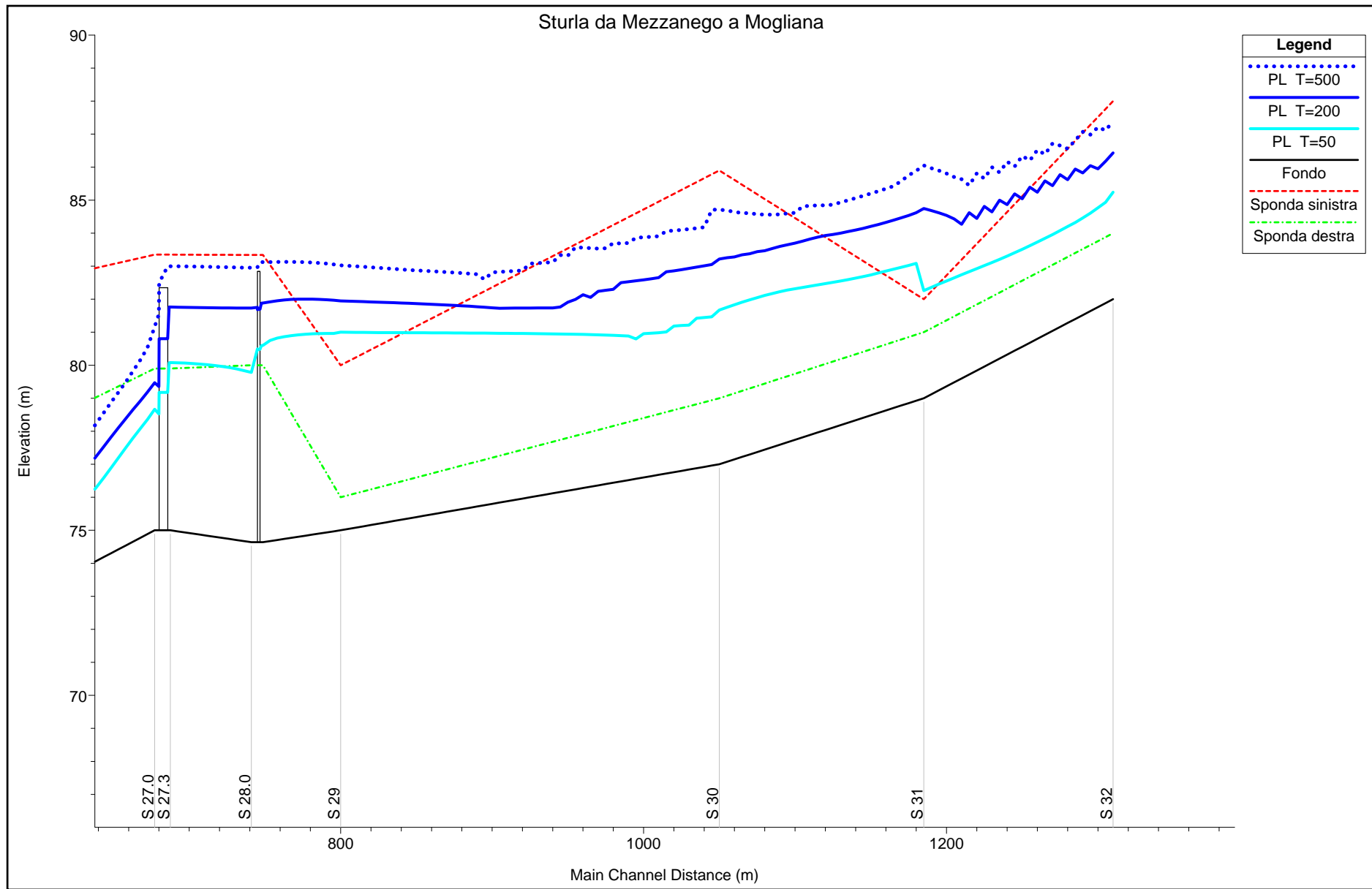


Torrente Sturla
Tra le confluenze con i
Torrenti Mezzanego e
Mogliana

VERIFICHE IDRAULICHE





HEC-RAS Plan: St4mzmg River: Sturla Reach: mzmng

Reach	River Sta	Profile	Q Total (m3/s)	Min Ch El (m)	LOB Elev (m)	L. Freeboard (m)	ROB Elev (m)	R. Freeboard (m)	W.S. Elev (m)	Crit W.S. (m)	E.G. Elev (m)	E.G. Slope (m/m)	Vel Chnl (m/s)	Flow Area (m2)	Top Width (m)	Froude # Chl
mzmng	32	T=50	364.00	82.00	88.00	2.76	84.00	-1.24	85.24	85.24	86.47	0.009151	4.94	75.87	33.08	0.98
mzmng	32	T=200	645.00	82.00	88.00	1.57	84.00	-2.43	86.43	86.43	88.10	0.008100	5.83	117.88	36.52	0.96
mzmng	32	T=500	940.00	82.00	88.00	0.61	84.00	-3.39	87.39	87.39	89.51	0.008001	6.61	153.25	37.00	0.98
mzmng	31	T=50	364.00	79.00	82.00	-0.26	81.00	-1.26	82.26	82.79	84.28	0.017656	6.31	58.77	28.77	1.35
mzmng	31	T=200	645.00	79.00	82.00	-2.75	81.00	-3.75	84.75		85.94	0.004055	4.98	146.55	41.65	0.73
mzmng	31	T=500	940.00	79.00	82.00	-4.05	81.00	-5.05	86.05		87.44	0.003531	5.47	207.32	52.20	0.71
mzmng	30	T=50	364.00	77.00	85.90	4.23	79.00	-2.67	81.67	81.67	83.10	0.007829	5.57	78.23	30.28	0.87
mzmng	30	T=200	645.00	77.00	85.90	2.68	79.00	-4.22	83.22	83.22	84.87	0.007317	6.30	135.21	44.11	0.85
mzmng	30	T=500	940.00	77.00	85.90	1.18	79.00	-5.72	84.72		86.14	0.005601	6.15	210.68	54.72	0.74
mzmng	29	T=50	364.00	75.00	80.00	-1.00	76.00	-5.00	81.00		81.38	0.001263	2.86	146.43	51.52	0.40
mzmng	29	T=200	645.00	75.00	80.00	-1.95	76.00	-5.95	81.95		82.73	0.002158	4.17	201.06	63.56	0.53
mzmng	29	T=500	940.00	75.00	80.00	-3.02	76.00	-7.02	83.02		83.97	0.002251	4.74	273.07	70.14	0.56
mzmng	28.3	T=50	364.00	74.64	83.34	2.74	80.00	-0.60	80.60		81.26	0.003890	3.70	117.27	69.12	0.64
mzmng	28.3	T=200	645.00	74.64	83.34	1.46	80.00	-1.88	81.88		82.56	0.003160	4.01	208.94	73.87	0.60
mzmng	28.3	T=500	940.00	74.64	83.34	0.22	80.00	-3.12	83.12		83.77	0.002479	4.06	308.13	86.98	0.54
mzmng	28.2	T=50	364.00	74.64	83.34	2.74	80.00	-0.60	80.59	79.77	81.26	0.003923	3.71	116.79	69.10	0.64
mzmng	28.2	T=200	645.00	74.64	83.34	1.46	80.00	-1.88	81.88	81.21	82.56	0.003174	4.02	208.56	73.85	0.60
mzmng	28.2	T=500	940.00	74.64	83.34	0.22	80.00	-3.12	83.12	81.93	83.77	0.002487	4.06	307.79	86.94	0.54
mzmng	28.11		Bridge													
mzmng	28.1	T=50	364.00	74.64	83.34	2.84	80.00	-0.50	80.50	79.77	81.23	0.004429	3.87	109.90	68.73	0.68
mzmng	28.1	T=200	645.00	74.64	83.34	1.59	80.00	-1.75	81.75		82.50	0.003562	4.19	199.35	73.39	0.63
mzmng	28.1	T=500	940.00	74.64	83.34	0.37	80.00	-2.97	82.97		83.68	0.002773	4.23	294.86	85.24	0.57
mzmng	28	T=50	364.00	74.64	83.34	3.56	80.00	0.22	79.78	79.77	81.14	0.009964	5.15	70.61	25.81	0.99
mzmng	28	T=200	645.00	74.64	83.34	1.61	80.00	-1.73	81.73		82.49	0.003642	4.22	197.63	73.30	0.64
mzmng	28	T=500	940.00	74.64	83.34	0.39	80.00	-2.95	82.95		83.67	0.002806	4.25	293.48	85.06	0.57
mzmng	27.3	T=50	364.00	75.00	83.35	3.27	79.90	-0.18	80.08		80.57	0.003101	3.09	119.15	53.65	0.58
mzmng	27.3	T=200	645.00	75.00	83.35	1.58	79.90	-1.87	81.77		82.25	0.001897	3.20	239.61	89.26	0.48
mzmng	27.3	T=500	940.00	75.00	83.35	0.35	79.90	-3.10	83.00		83.48	0.001536	3.32	362.02	103.49	0.44
mzmng	27.2	T=50	364.00	75.00	83.35	3.28	79.90	-0.17	80.07	79.05	80.56	0.003119	3.10	118.90	53.55	0.58
mzmng	27.2	T=200	645.00	75.00	83.35	1.59	79.90	-1.86	81.76	80.22	82.25	0.001901	3.20	239.38	89.21	0.48
mzmng	27.2	T=500	940.00	75.00	83.35	0.35	79.90	-3.10	83.00	81.17	83.48	0.001538	3.32	361.83	103.48	0.44
mzmng	27.11		Bridge													
mzmng	27.1	T=50	364.00	75.00	83.35	4.83	79.90	1.38	78.52	79.04	80.42	0.022559	6.10	59.70	33.85	1.47
mzmng	27.1	T=200	645.00	75.00	83.35	4.00	79.90	0.55	79.35	80.22	82.02	0.021767	7.24	89.12	37.36	1.50
mzmng	27.1	T=500	940.00	75.00	83.35	1.80	79.90	-1.65	81.55	81.17	82.73	0.004846	4.97	220.68	84.67	0.76

HEC-RAS Plan: St4mzmg River: Sturla Reach: mzmg (Continued)

Reach	River Sta	Profile	Q Total (m3/s)	Min Ch El (m)	LOB Elev (m)	L. Freeboard (m)	ROB Elev (m)	R. Freeboard (m)	W.S. Elev (m)	Crit W.S. (m)	E.G. Elev (m)	E.G. Slope (m/m)	Vel Chnl (m/s)	Flow Area (m2)	Top Width (m)	Froude # Chl
mzmg	27	T=50	364.00	75.00	83.35	4.68	79.90	1.23	78.67	79.06	80.28	0.017755	5.64	64.58	34.30	1.31
mzmg	27	T=200	645.00	75.00	83.35	3.88	79.90	0.43	79.47	80.22	81.90	0.019048	6.90	93.47	38.02	1.40
mzmg	27	T=500	940.00	75.00	83.35	2.18	79.90	-1.27	81.17	81.17	82.68	0.006784	5.56	190.20	76.69	0.89
mzmg	26	T=50	364.00	73.50	82.70	7.58	78.50	3.38	75.12	76.03	78.19	0.044690	7.76	46.88	31.02	2.02
mzmg	26	T=200	645.00	73.50	82.70	6.80	78.50	2.60	75.90	77.14	79.99	0.037151	8.96	71.98	32.97	1.94
mzmg	26	T=500	940.00	73.50	82.70	5.95	78.50	1.75	76.75	78.12	81.18	0.028370	9.32	100.82	35.08	1.76
mzmg	25	T=50	364.00	71.40	72.40	-2.19	74.00	-0.59	74.59	75.06	76.46	0.016609	6.66	69.08	37.72	1.34
mzmg	25	T=200	645.00	71.40	72.40	-3.14	74.00	-1.54	75.54	75.97	78.07	0.015592	7.98	108.27	45.87	1.37
mzmg	25	T=500	940.00	71.40	72.40	-4.08	74.00	-2.48	76.48	77.32	79.36	0.013638	8.74	157.61	61.86	1.33
mzmg	24	T=50	364.00	69.30	74.00	0.65	74.00	0.65	73.35		73.71	0.002290	2.63	138.17	49.87	0.51
mzmg	24	T=200	645.00	69.30	74.00	-1.24	74.00	-1.24	75.24		75.54	0.001109	2.52	309.95	127.42	0.38
mzmg	24	T=500	940.00	69.30	74.00	-2.50	74.00	-2.50	76.50		76.78	0.000817	2.55	484.50	142.50	0.34
mzmg	23	T=50	364.00	69.00	74.00	1.96	74.00	1.96	72.04		72.90	0.006341	4.10	88.69	33.59	0.81
mzmg	23	T=200	645.00	69.00	74.00	-0.73	74.00	-0.73	74.73		75.33	0.002037	3.43	188.87	41.80	0.50
mzmg	23	T=500	940.00	69.00	74.00	-1.68	74.00	-1.68	75.68		76.56	0.002368	4.17	230.60	46.07	0.55
mzmg	22	T=50	364.00	67.00	70.00	-1.37	70.00	-1.37	71.37		71.85	0.002860	3.08	121.14	45.58	0.57
mzmg	22	T=200	645.00	67.00	70.00	-4.86	70.00	-4.86	74.86		75.12	0.000571	2.32	318.54	66.62	0.29
mzmg	22	T=500	940.00	67.00	70.00	-5.91	70.00	-5.91	75.91		76.28	0.000694	2.83	390.25	70.29	0.33
mzmg	21	T=50	364.00	65.00	70.00	-0.88	68.00	-2.88	70.88	69.45	71.50	0.002397	3.56	110.22	30.04	0.54
mzmg	21	T=200	645.00	65.00	70.00	-4.55	68.00	-6.55	74.55	70.89	75.01	0.000858	3.18	258.15	64.40	0.36
mzmg	21	T=500	940.00	65.00	70.00	-5.44	68.00	-7.44	75.44	72.01	76.14	0.001177	4.00	317.84	69.74	0.43

