


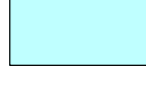


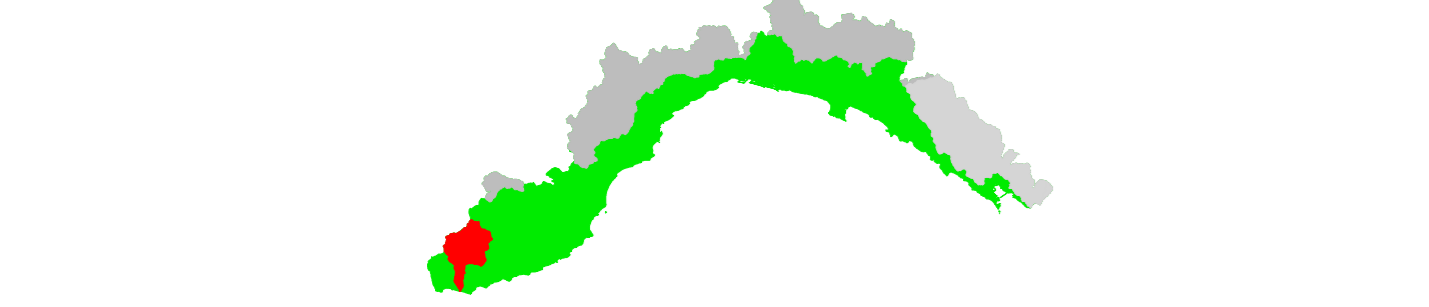
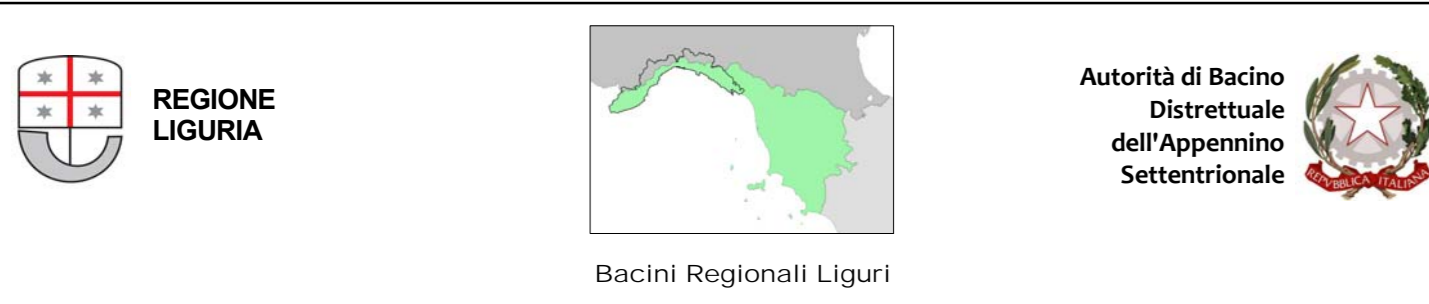
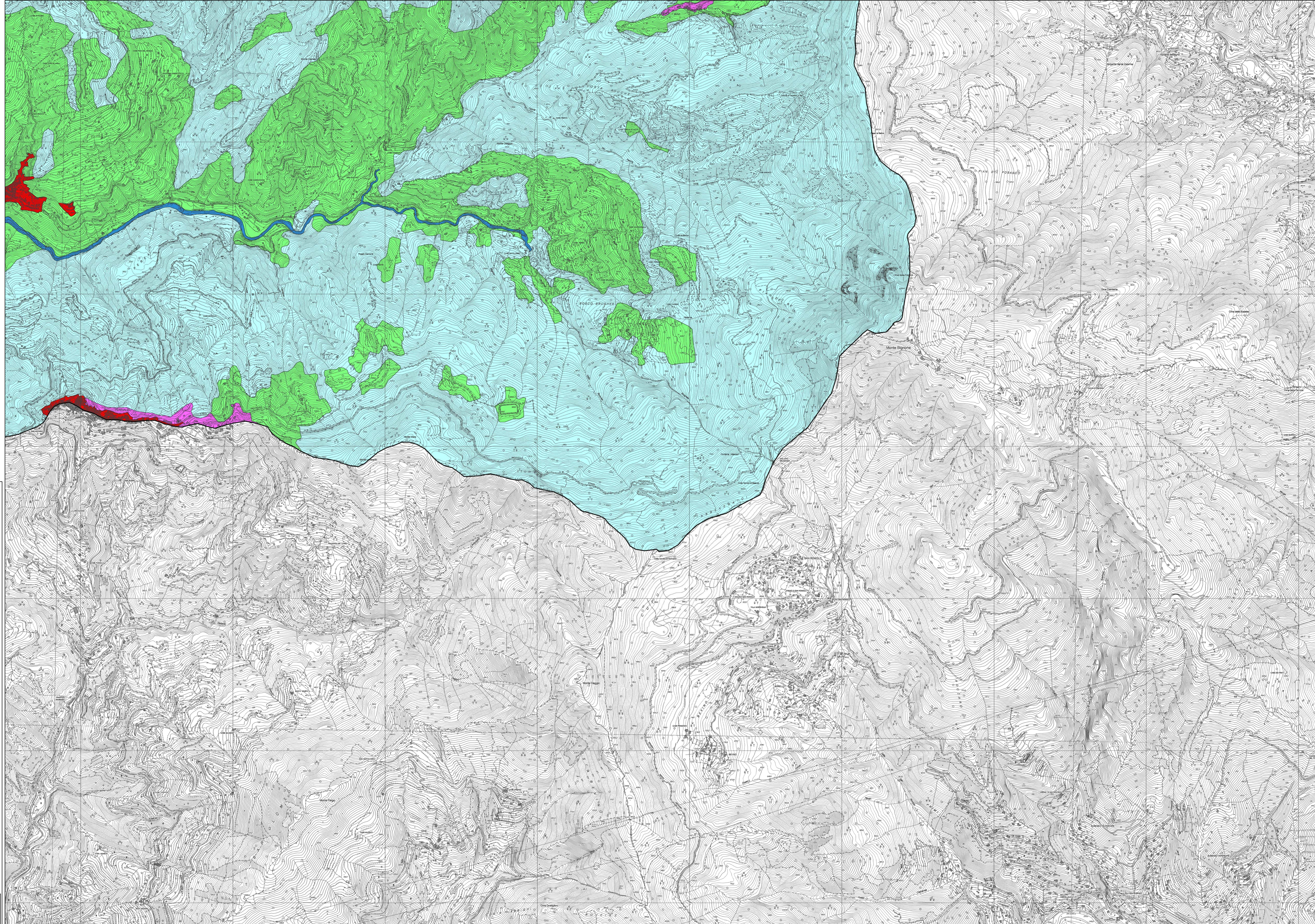


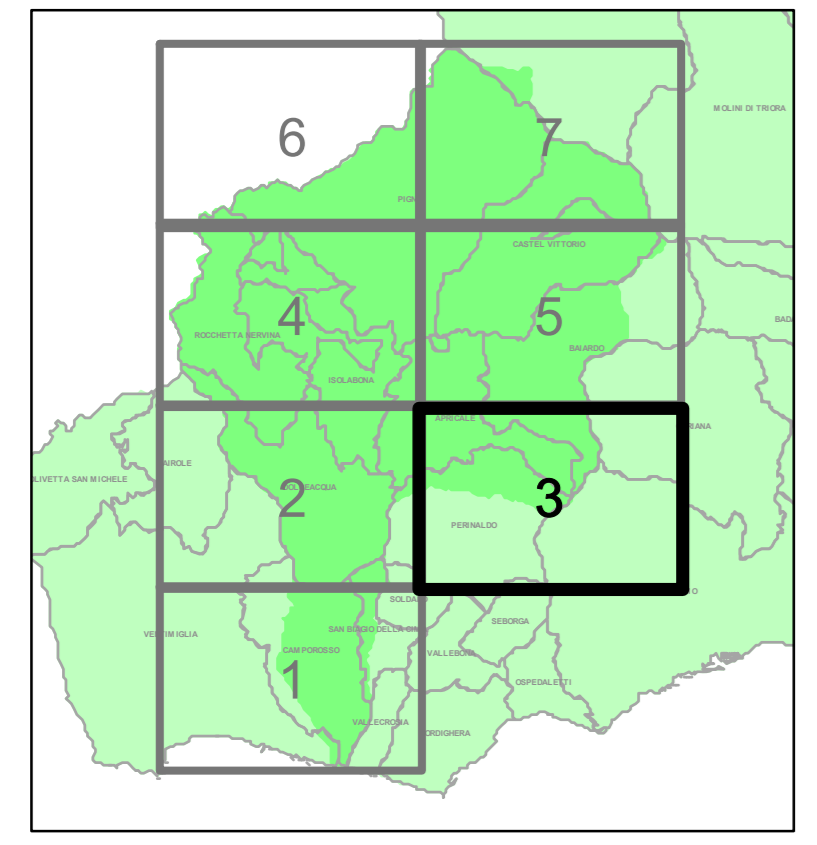
**LEGENDA**

-  E3 - Centri urbani, grandi insediamenti industriali e commerciali, beni architettonici, storici ed artistici, principali infrastrutture viarie, servizi di rilevante interesse sociale
-  E2 - Nuclei urbani, insediamenti industriali, artigianali e commerciali minori
-  E1 - Edifici isolati, infrastrutture viarie minori, zone agricole e verde pubblico
-  E0 - Aree disabitate o improduttive
-  Alveo
-  Limite del bacino



**PIANO DI BACINO STRALCIO PER L'ASSETTO IDROGEOLOGICO**

**AMBITO 2 - NERVIA  
TORRENTE NERVIA**



**CARTA DEGLI ELEMENTI A RISCHIO**

PRIMA APPROVAZIONE	Delibera del Consiglio Provinciale n. 87 del 15/10/2002	SCALA	TAVOLA
ULTIMA MODIFICA DELL'ELABORATO	Decreto del Direttore Generale n. 3721 del 01/07/2020	1:10.000	3 di 7
ENTRATA IN VIGORE	Pubblicazione sul BURL n. 29 del 15/07/2020 - parte II		