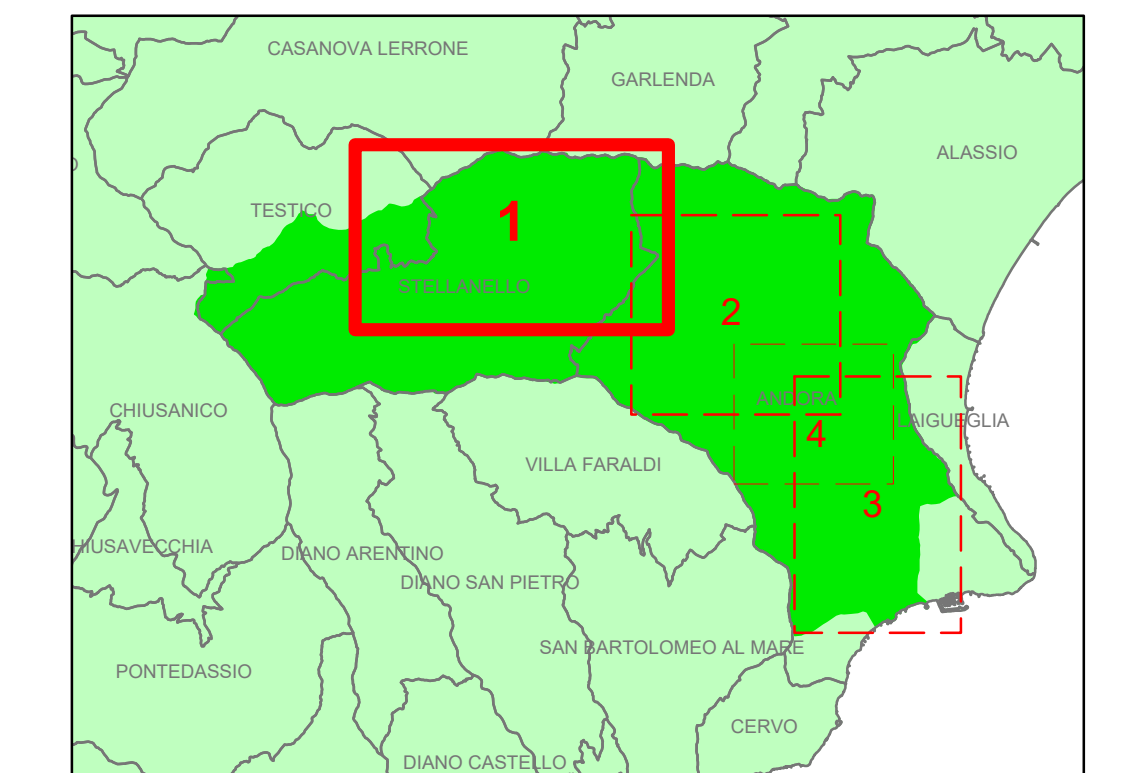


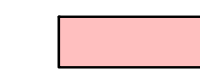
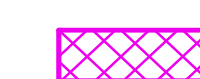
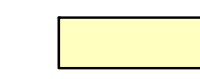



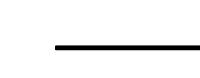
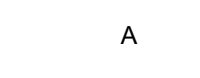
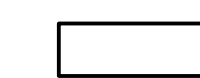
**PIANO DI BACINO STRALCIO PER L'ASSETTO IDROGEOLOGICO**  
**AMBITO 8 - Merula**  
**MERULA**



**CARTA DELLE AREE INONDABILI**

PRIMA APPROVAZIONE	Delibera del Consiglio Provinciale n. 43 del 26/10/2002	SCALA	TAVOLA
ULTIMA MODIFICA DELL'ELABORATO	Decreto del Direttore Generale n. 436 del 26/01/2011	1:5.000	1
ENTRATA IN VIGORE	BURL n. 7 del 17/02/2011 - parte II		

**LEGENDA**

-  Aree inondabili per T = 50
-  Aree inondate evento novembre 2014 ex DGR 59/2015
-  Aree inondabili per T = 200
-  Aree inondabili per T = 500
-  Aree storicamente inondate (mappatura allegata alle DGR 2615/1998 e 594/2001)
-  Alveo attuale (a cielo aperto)
-  Ubicazione sezione idraulica
-  numero sezione idraulica
-  Limite del bacino

Rilievo di base: Carta Tecnica Regionale fornita dalla Regione Liguria - CTR 5000