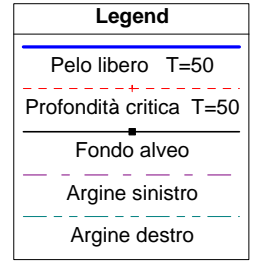
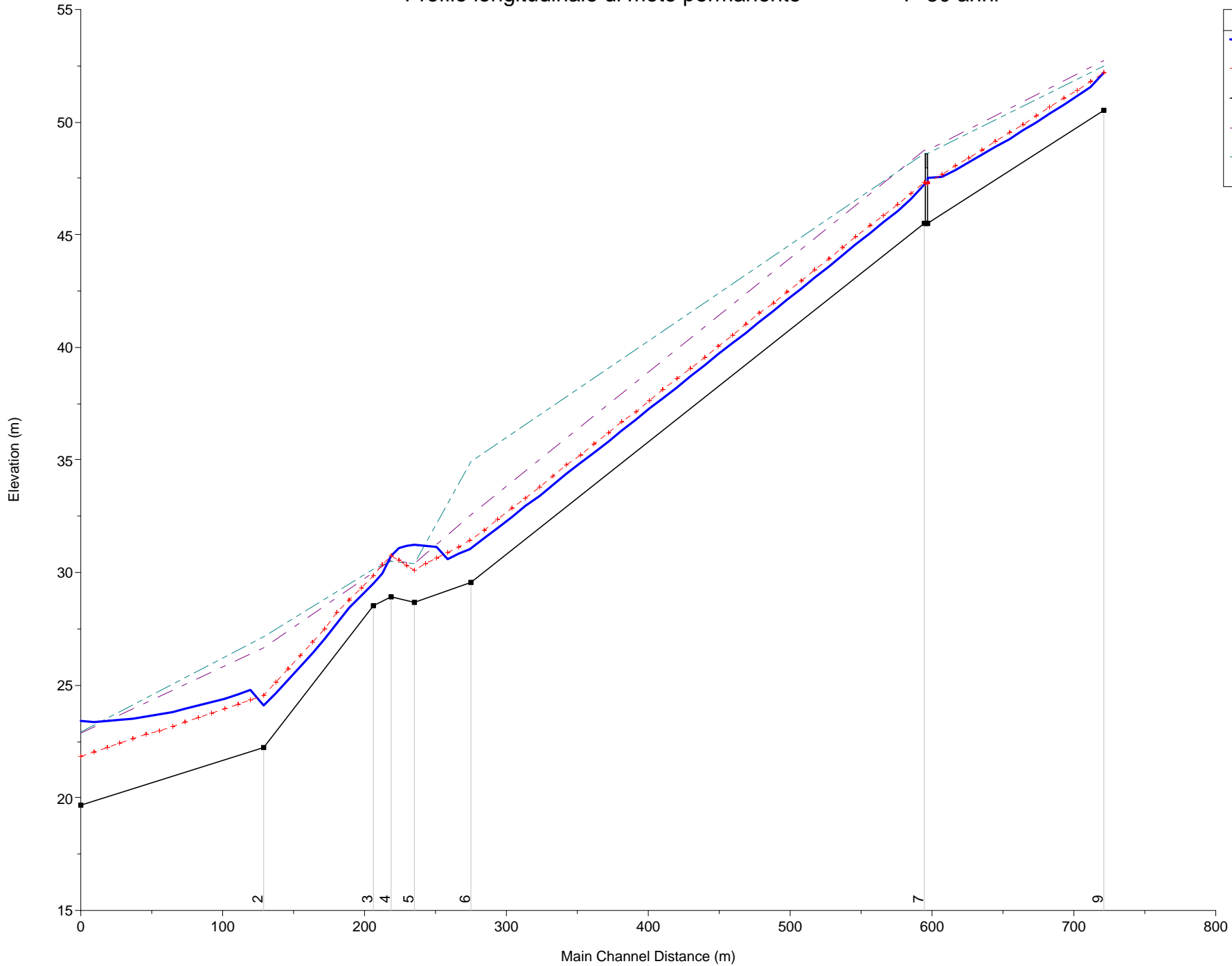


**PROFILI DI RIGURGITO IN CONDIZIONI DI MOTO
PERMANENTE PER LE PORTATE T=50, 200, 500 ANNI**

Rio Acquaviva

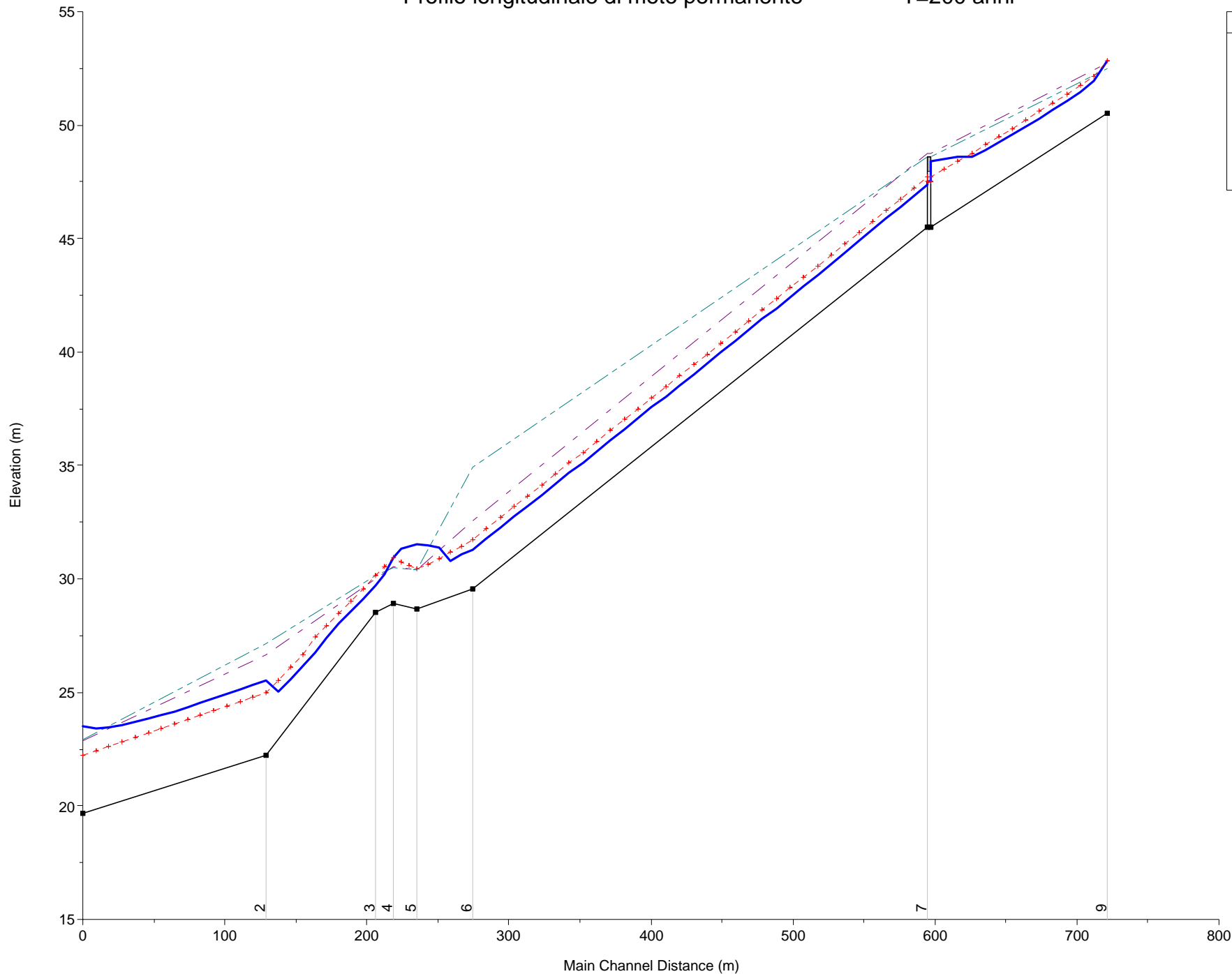
Profilo longitudinale di moto permanente

T=50 anni



Profilo longitudinale di moto permanente

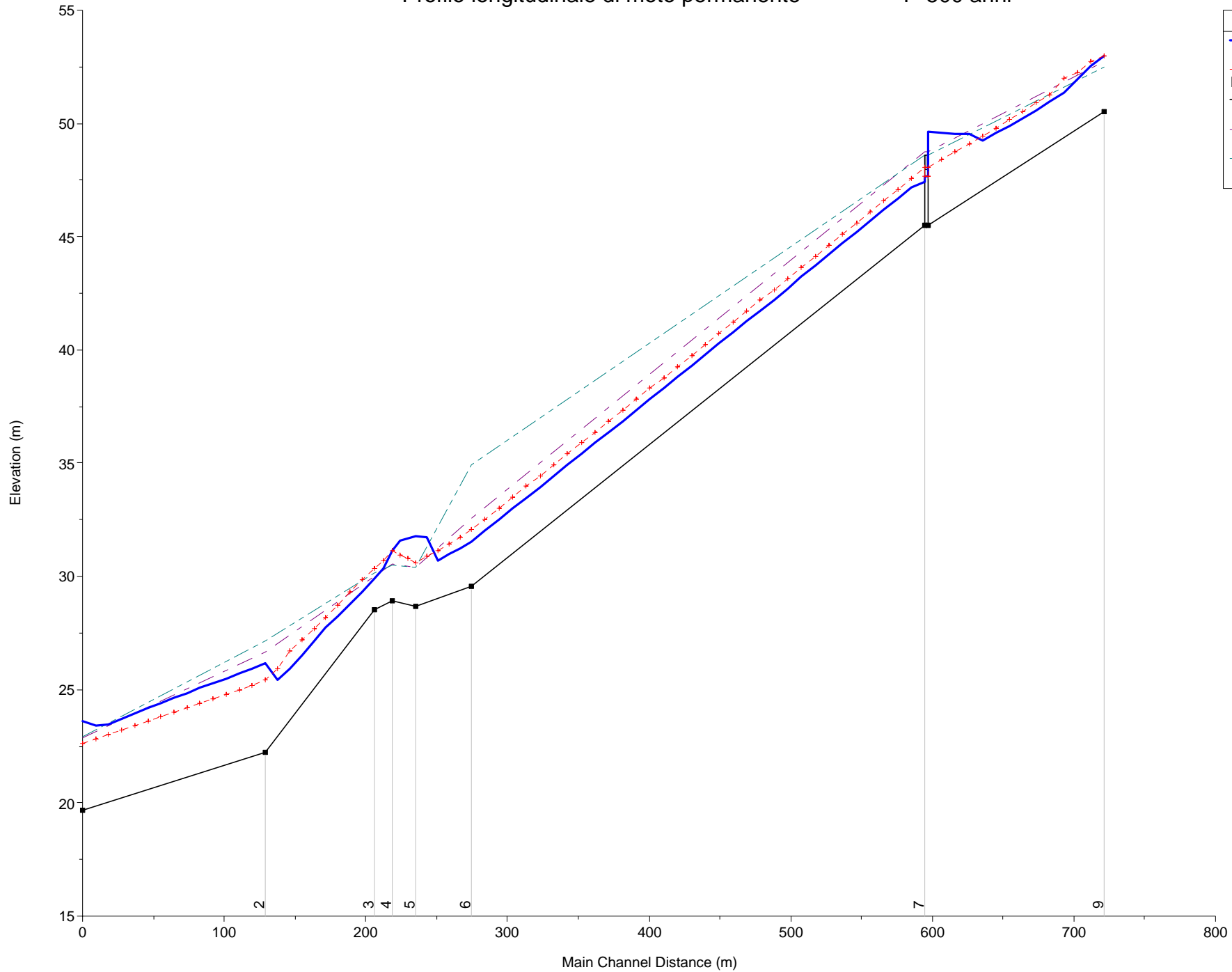
T=200 anni



Legend	
	Pelo libero T=200
	Profondità critica T=200
	Fondo alveo
	Argine sinistro
	Argine destro

Profilo longitudinale di moto permanente

T=500 anni



Legend

- Pelo libero T=500
- Profondità critica T=500
- Fondo alveo
- Argine sinistro
- Argine destro

GEOMETRIA DELLE SEZIONI ED ALTEZZA DEL PELO
LIBERO IN CONDIZIONI DI MOTO PERMANENTE
PER LE PORTATE $T=50, 200, 500$ ANNI

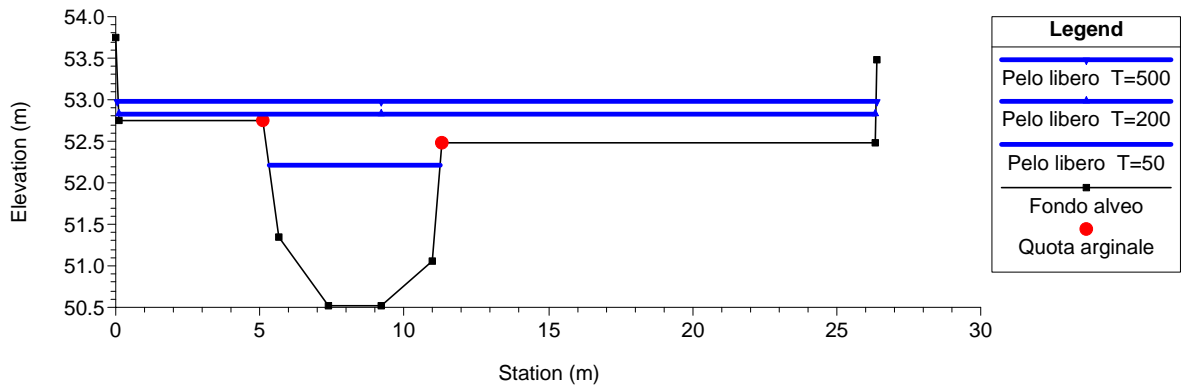
Acquaviva

DALLA SEZ. 9
ALLA SEZ. 1

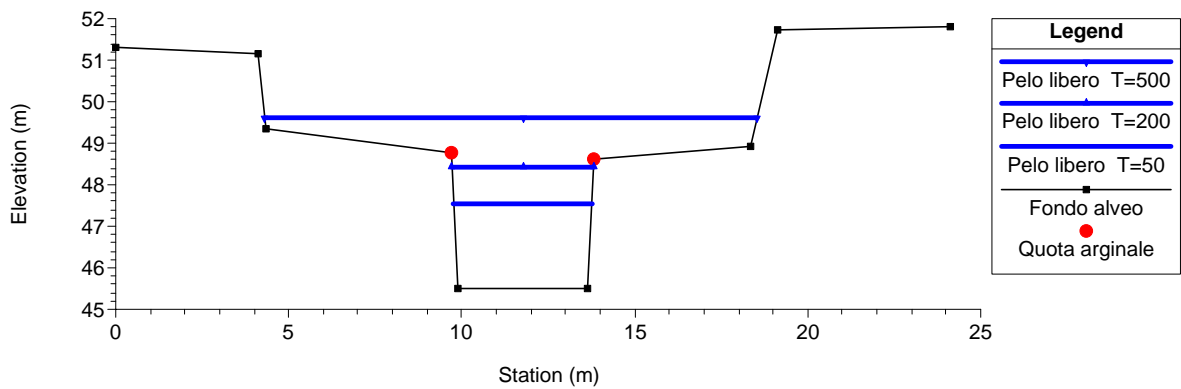
RIO ACQUAVIVA

Sezioni trasversali

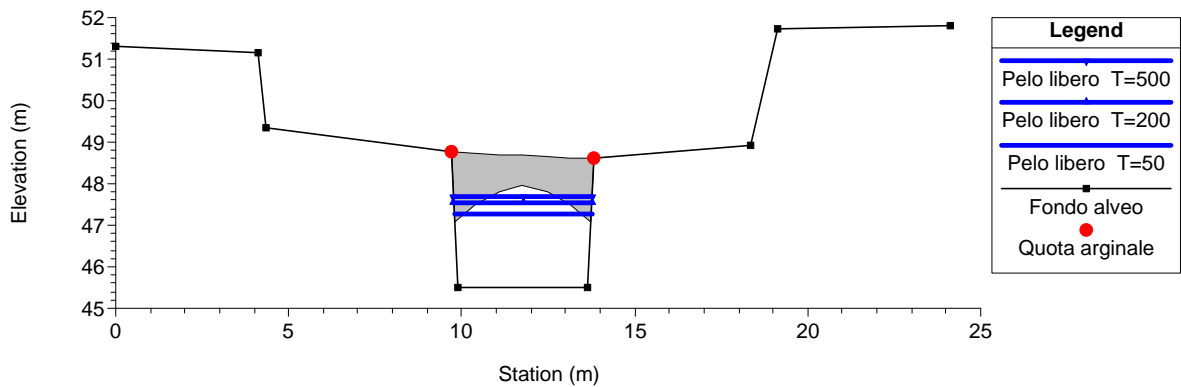
RS = 9



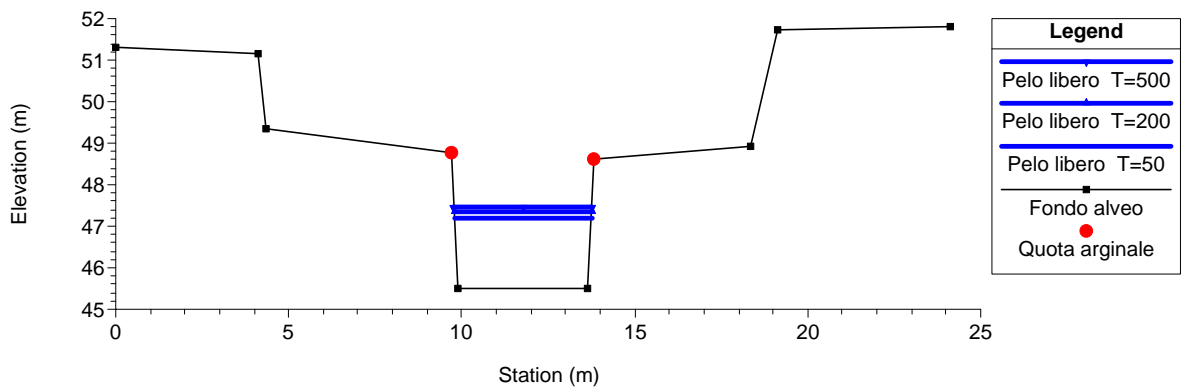
RS = 8



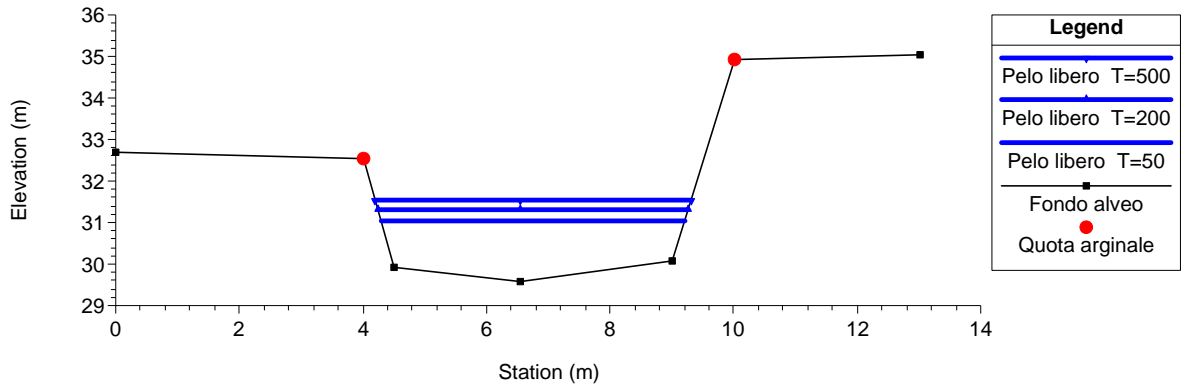
RS = 7.5 BR



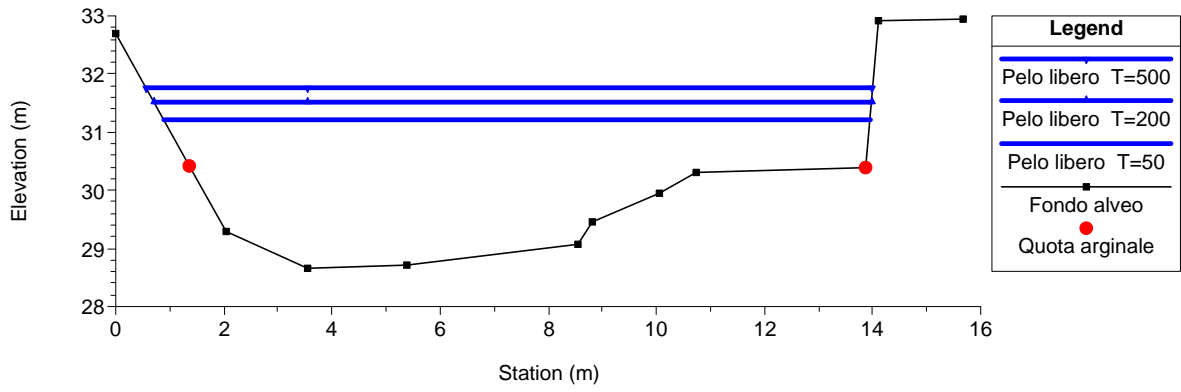
RS = 7



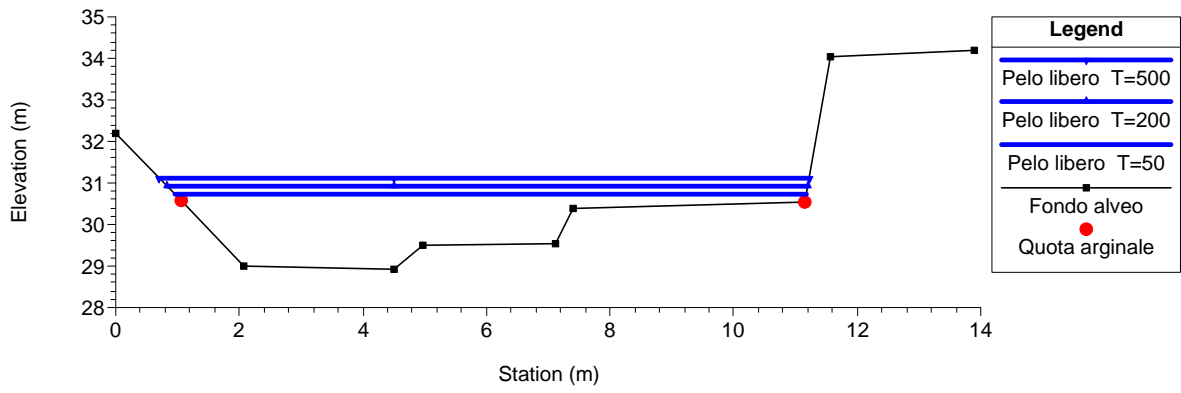
RS = 6



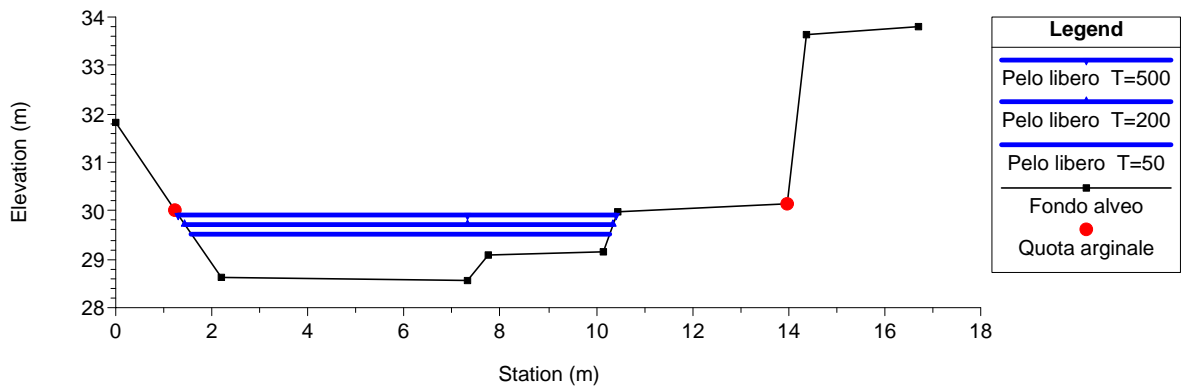
RS = 5



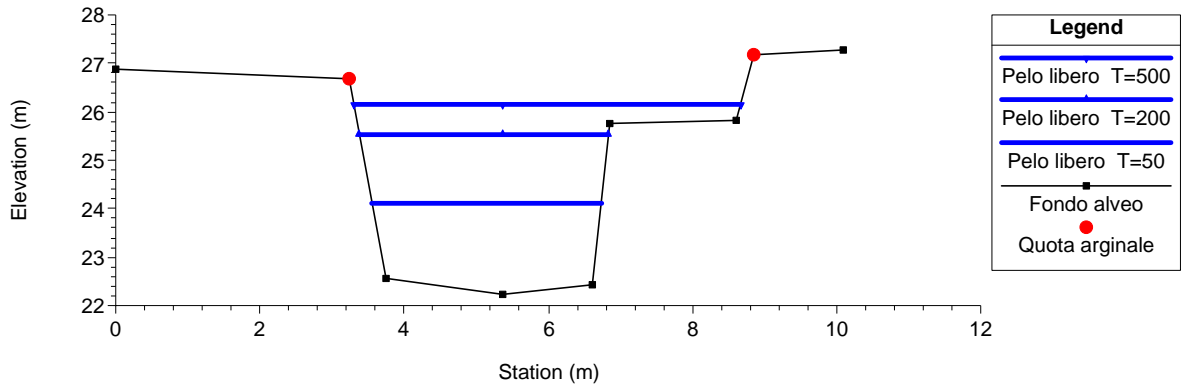
RS = 4



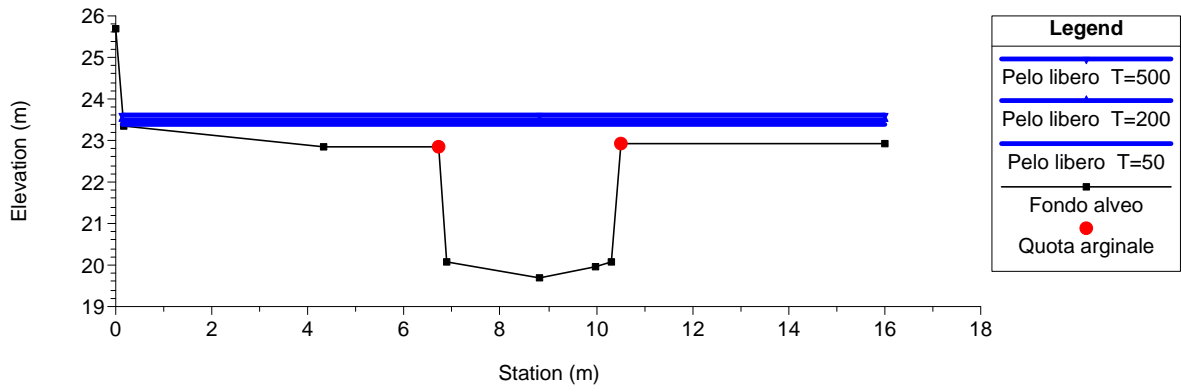
RS = 3



RS = 2



RS = 1



**MODELLAZIONE IDRAULICA IN CONDIZIONI DI MOTO
PERMANENTE:
TABELLE DELLE GRANDEZZE IDRAULICHE SIGNIFICATIVE
PER LE PORTATE T=50, 200, 500 ANNI**

Rio Acquaviva

Rio Acquaviva T=50 anni										
Sezioni	Portata totale (m3/s)	Fondo alveo (m)	Argine sinistro (m)	Argine destro (m)	Pelo libero (m)	Profondità critica (m)	Energia (m2)	Velocità (m/s)	Area bagnata (m2)	N° Froude
9	30	50.51	52.75	52.49	52.21	52.21	52.9	3.69	8.13	1.01
8	30	45.5	48.76	48.6	47.52	47.34	48.27	3.82	7.85	0.87
7.5	Bridge									
7	30	45.5	48.76	48.6	47.21	47.34	48.26	4.55	6.59	1.13
6	30	29.56	32.54	34.91	31.04	31.41	32.36	5.09	5.9	1.48
5	30	28.66	30.42	30.38	31.22	30.13	31.32	1.34	22.53	0.32
4	30	28.94	30.56	30.52	30.72	30.72	31.21	3.08	9.75	1
3	30	28.55	30.03	30.13	29.53	29.86	30.63	4.65	6.45	1.73
2	30	22.22	26.67	27.17	24.12	24.55	25.77	5.7	5.26	1.41
1	30	19.69	22.86	22.94	23.4	21.84	23.58	2	17.88	0.35

Rio Acquaviva T=200 anni										
Sezioni	Portata totale (m3/s)	Fondo alveo (m)	Argine sinistro (m)	Argine destro (m)	Pelo libero (m)	Profondità critica (m)	Energia (m2)	Velocità (m/s)	Area bagnata (m2)	N° Froude
9	40	50.51	52.75	52.49	52.84	52.84	53.2	2.85	17.6	0.66
8	40	45.5	48.76	48.6	48.42	47.73	49.04	3.48	11.48	0.67
7.5	Bridge									
7	40	45.5	48.76	48.6	47.36	47.73	48.93	5.55	7.21	1.32
6	40	29.56	32.54	34.91	31.31	31.74	32.87	5.54	7.22	1.48
5	40	28.66	30.42	30.38	31.51	30.45	31.63	1.54	26.26	0.34
4	40	28.94	30.56	30.52	30.93	30.93	31.51	3.38	11.88	1
3	40	28.55	30.03	30.13	29.71	30.18	30.98	4.99	8.02	1.68
2	40	22.22	26.67	27.17	25.53	25.01	26.35	4.01	9.96	0.76
1	40	19.69	22.86	22.94	23.5	22.25	23.76	2.46	19.47	0.42

Rio Acquaviva T=500 anni										
Sezioni	Portata totale (m3/s)	Fondo alveo (m)	Argine sinistro (m)	Argine destro (m)	Pelo libero (m)	Profondità critica (m)	Energia (m2)	Velocità (m/s)	Area bagnata (m2)	N° Froude
9	50	50.51	52.75	52.49	52.97	52.97	53.36	3.04	21.16	0.68
8	50	45.5	48.76	48.6	49.62	48.08	49.89	2.46	23.48	0.39
7.5	Bridge									
7	50	45.5	48.76	48.6	47.45	48.08	49.69	6.63	7.54	1.54
6	50	29.56	32.54	34.91	31.55	32.05	33.33	5.9	8.47	1.47
5	50	28.66	30.42	30.38	31.77	30.62	31.91	1.71	29.71	0.36
4	50	28.94	30.56	30.52	31.12	31.12	31.79	3.64	13.82	1
3	50	28.55	30.03	30.13	29.9	30.33	31.24	5.12	9.77	1.58
2	50	22.22	26.67	27.17	26.15	25.41	26.93	3.92	12.77	0.81
1	50	19.69	22.86	22.94	23.6	22.63	23.95	2.85	21.06	0.48